

Four Bedroom Penthouse in Luxury Resort on the Long Beach

Long Beach, Iskele Long Beach, North Cyprus

- Property Ref: 536
- Private roof terrace.
- Resort facilities.
- Good location close to the sandy beach.
- A great investment opportunity.
- Rental management option available.

£1,700,000



4 Bedrooms



4 Bathrooms



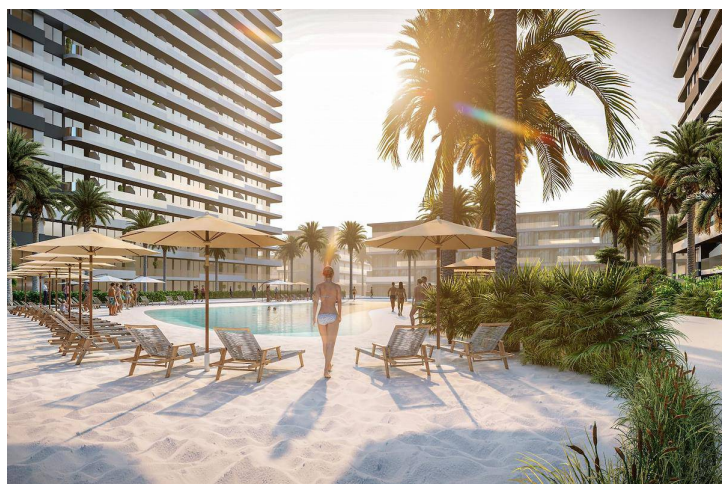
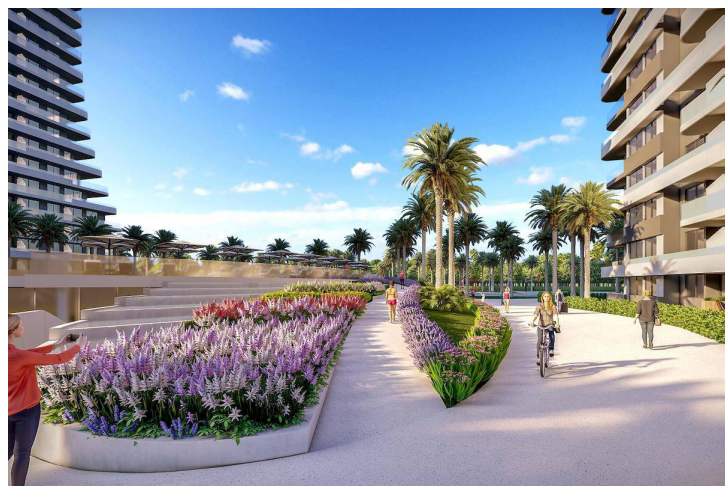
40 Months
Instalments



September 2027
Completion

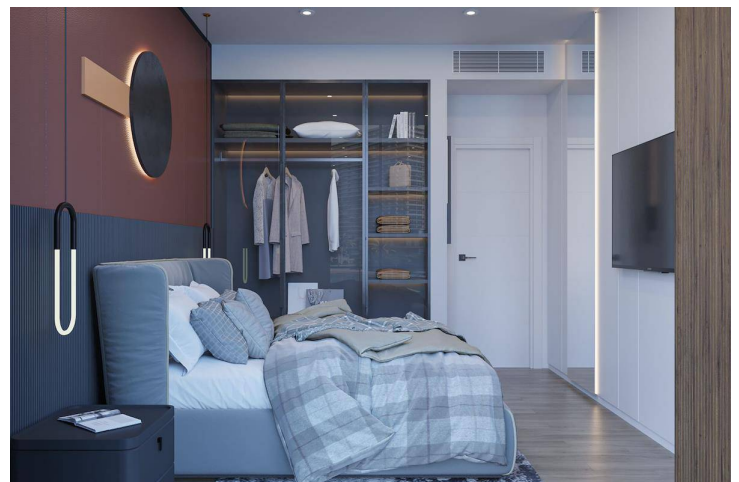
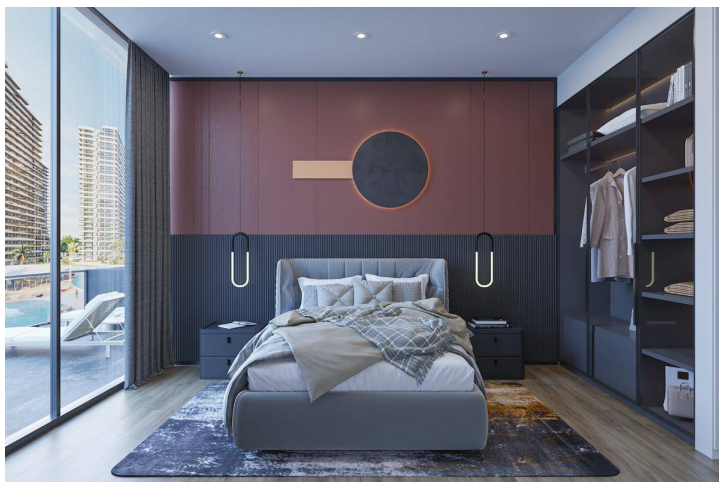
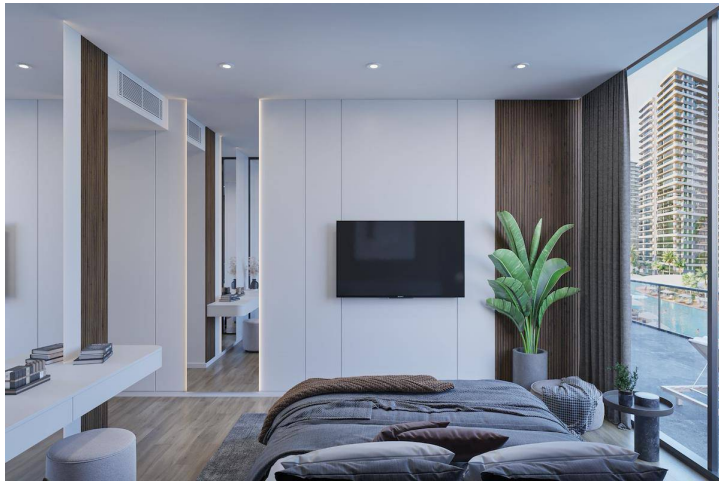
Four Bedroom Penthouse in Luxury Resort on the Long Beach

Exterior Images

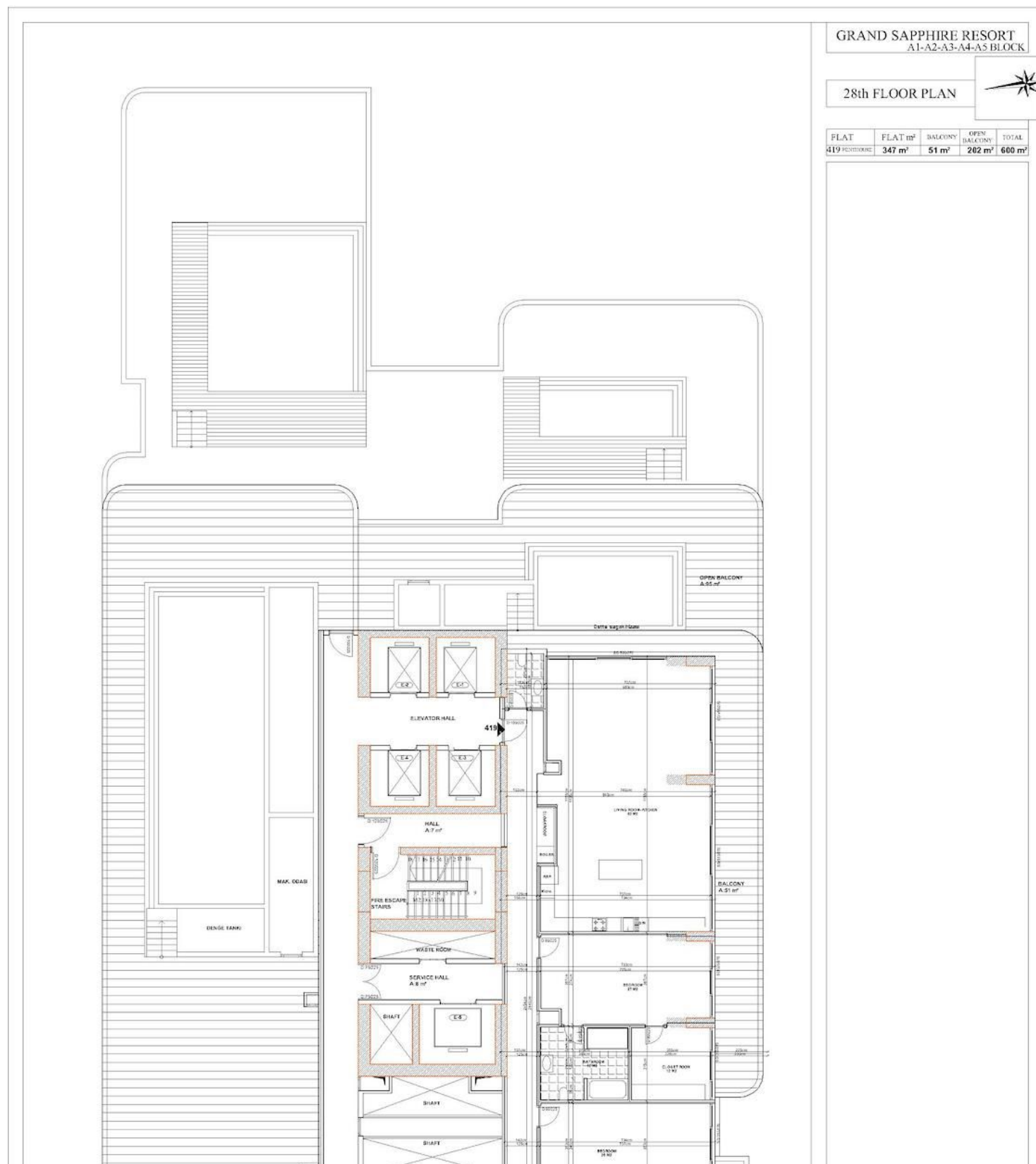


Four Bedroom Penthouse in Luxury Resort on the Long Beach

Interior Images



Floor Plan



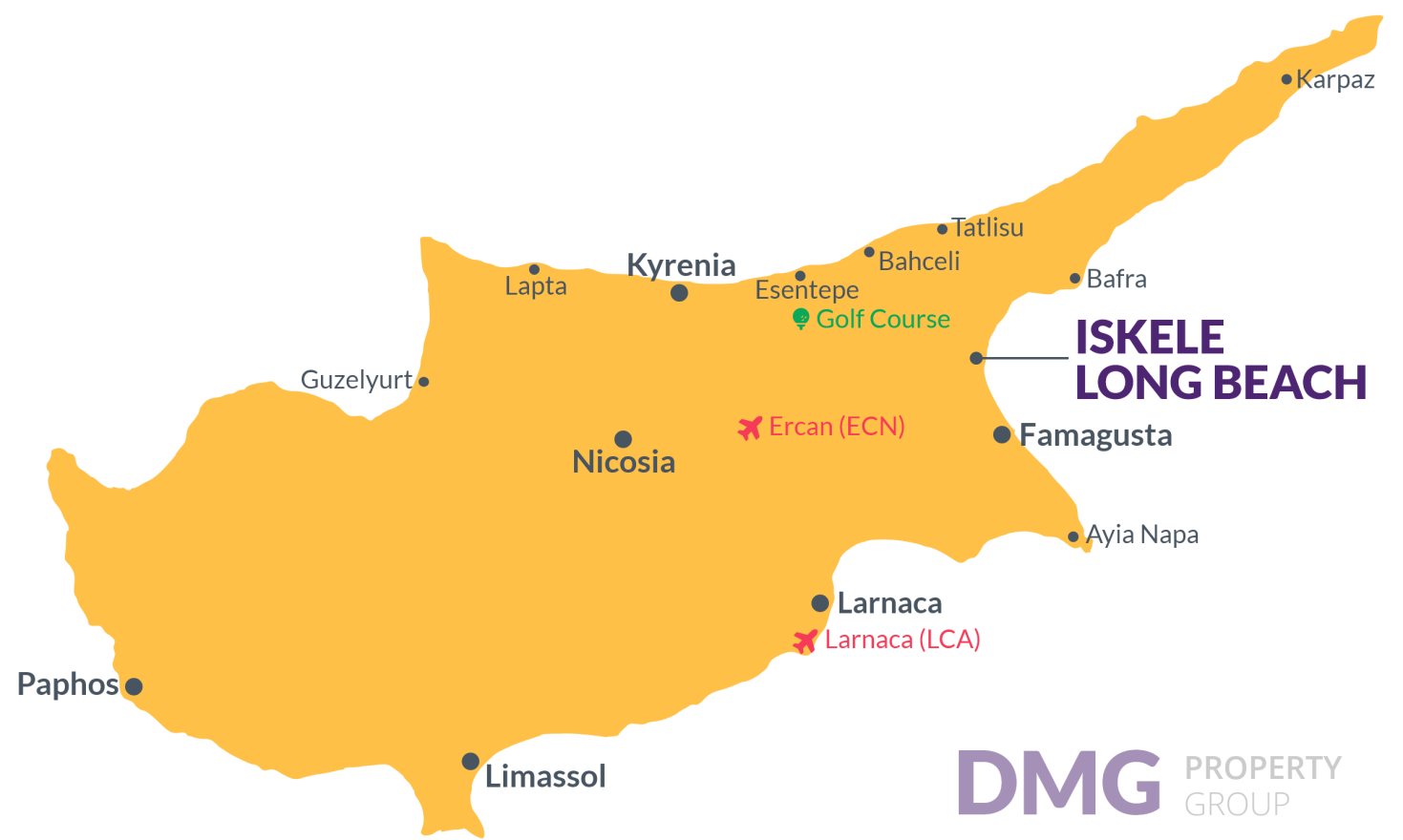
Site Plan

Long Beach, Iskele Long Beach, North Cyprus



Project Location

The project is located in Iskele Long Beach, 500 meters away from the sea.



| | | | |
|----------------------|---------|-----------------|---------|
| Beach Club | 2 mins | Hospital | 12 mins |
| Sandy Beach | 3 mins | Ercan Airport | 40 mins |
| Supermarket | 5 mins | Larnaca Airport | 60 mins |
| Restaurants and Bars | 5 mins | | |
| Famagusta | 10 mins | | |

About the Project

The newest project brings a new and luxurious perspective to life in Long Beach, Iskele, which is 500 meters away from the sea. The resort has 5 Highrise buildings which have 28 floors and 8 low-rise Block which have 5 floors.

The Project is located on the land with total 90727.18 m2 area and 2345 units which includes Studio, 1+1, 2+1, 3+1 and Penthouses.

Some of the facilities will be: three-storey parking area, Fit plus, infinity swimming pools on top of each highrise block, Business center and also all facilities in the project can be used. In the resort, there will be a total of 10000 m2 of indoor and outdoor swimming pools area. Also, pet park, paddle tennis courts and multifunctional fields.

Lowest Price Unit For This Property Type

Property Info

| Type |
|---------------------|
| 4 Bedroom Penthouse |

| No |
|--------|
| 26-401 |

| Block |
|-------------|
| BLU BLOK 02 |

| Floor |
|-------|
| 26 |

| Interior |
|-----------------------|
| 217.00 m ² |

| Total Living Space |
|-----------------------|
| 217.00 m ² |

Lowest Price Unit For This Property Type

Payment Plan

| | | | | |
|--------------|------------|----------------|------------|-------------------------|
| Current Date | Start Date | Delivery Date | Price | Initial Payment Amount |
| May 2024 | June 2024 | September 2027 | £1,700,000 | £595,000 <div>35%</div> |

65% of the installment payment plan

| | | | |
|--------------------------------|---------|--------------------------------|---------|
| 1. Installment June 2024 | £27,625 | 25. Installment June 2026 | £27,625 |
| 2. Installment July 2024 | £27,625 | 26. Installment July 2026 | £27,625 |
| 3. Installment August 2024 | £27,625 | 27. Installment August 2026 | £27,625 |
| 4. Installment September 2024 | £27,625 | 28. Installment September 2026 | £27,625 |
| 5. Installment October 2024 | £27,625 | 29. Installment October 2026 | £27,625 |
| 6. Installment November 2024 | £27,625 | 30. Installment November 2026 | £27,625 |
| 7. Installment December 2024 | £27,625 | 31. Installment December 2026 | £27,625 |
| 8. Installment January 2025 | £27,625 | 32. Installment January 2027 | £27,625 |
| 9. Installment February 2025 | £27,625 | 33. Installment February 2027 | £27,625 |
| 10. Installment March 2025 | £27,625 | 34. Installment March 2027 | £27,625 |
| 11. Installment April 2025 | £27,625 | 35. Installment April 2027 | £27,625 |
| 12. Installment May 2025 | £27,625 | 36. Installment May 2027 | £27,625 |
| 13. Installment June 2025 | £27,625 | 37. Installment June 2027 | £27,625 |
| 14. Installment July 2025 | £27,625 | 38. Installment July 2027 | £27,625 |
| 15. Installment August 2025 | £27,625 | 39. Installment August 2027 | £27,625 |
| 16. Installment September 2025 | £27,625 | 40. Installment September 2027 | £27,625 |
| 17. Installment October 2025 | £27,625 | | |
| 18. Installment November 2025 | £27,625 | | |
| 19. Installment December 2025 | £27,625 | | |
| 20. Installment January 2026 | £27,625 | | |
| 21. Installment February 2026 | £27,625 | | |
| 22. Installment March 2026 | £27,625 | | |
| 23. Installment April 2026 | £27,625 | | |
| 24. Installment May 2026 | £27,625 | | |