

# Two Bedroom Penthouse in Yenikent

Yenikent, Nicosia, North Cyprus

- Property Ref: 505
- Private roof terrace. Ready to move in.
- VRF system is included.
- Private storage place and parking space.
- A well-maintained residential complex with a green area and facilities.
- Located in a prestigious area in Nicosia close to the border with the European Union.

Starting from  
**£195,000**



130 m<sup>2</sup>



2 Bedrooms



2 Bathrooms



February 2024  
Completion



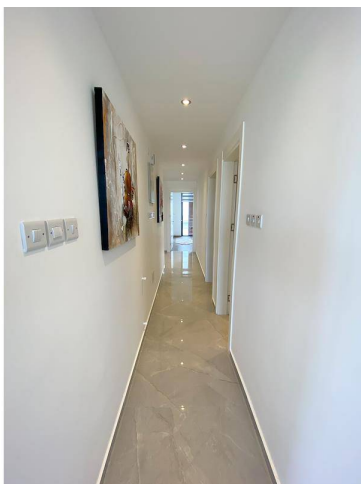
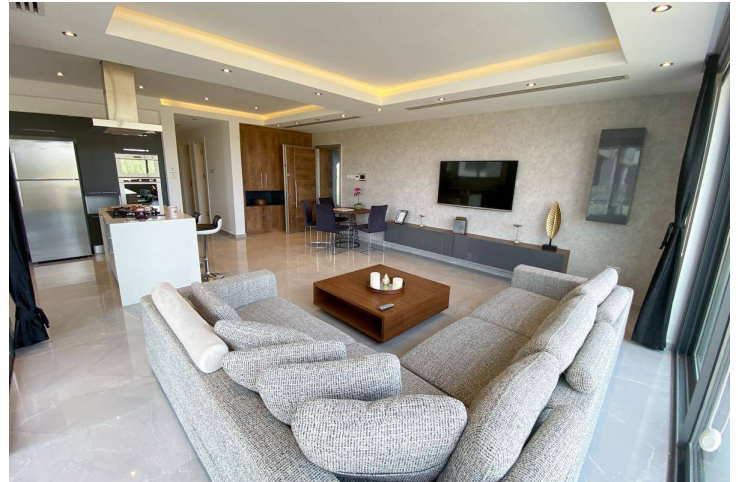
# Two Bedroom Penthouse in Yenikent

## Exterior Images



# Two Bedroom Penthouse in Yenikent

## Interior Images





# Two Bedroom Penthouse in Yenikent

## Floor Plan

- |    |                     |                    |
|----|---------------------|--------------------|
| 1  | Giriş Holü          | : 4m <sup>2</sup>  |
| 2  | Salon & Yemek Böl.  | : 24m <sup>2</sup> |
| 3  | Mutfak              | : 16m <sup>2</sup> |
| 4  | Kiler               | : 5m <sup>2</sup>  |
| 5  | Hol                 | : 8m <sup>2</sup>  |
| 6  | WC & Duş            | : 5m <sup>2</sup>  |
| 7  | Yatak Odası 1.      | : 15m <sup>2</sup> |
| 8  | Ebeveyn Yatak Odası | : 16m <sup>2</sup> |
| 9  | Dolap Odası         | : 5m <sup>2</sup>  |
| 10 | WC & Duş            | : 4m <sup>2</sup>  |
| 11 | Balkon 1.           | : 28m <sup>2</sup> |



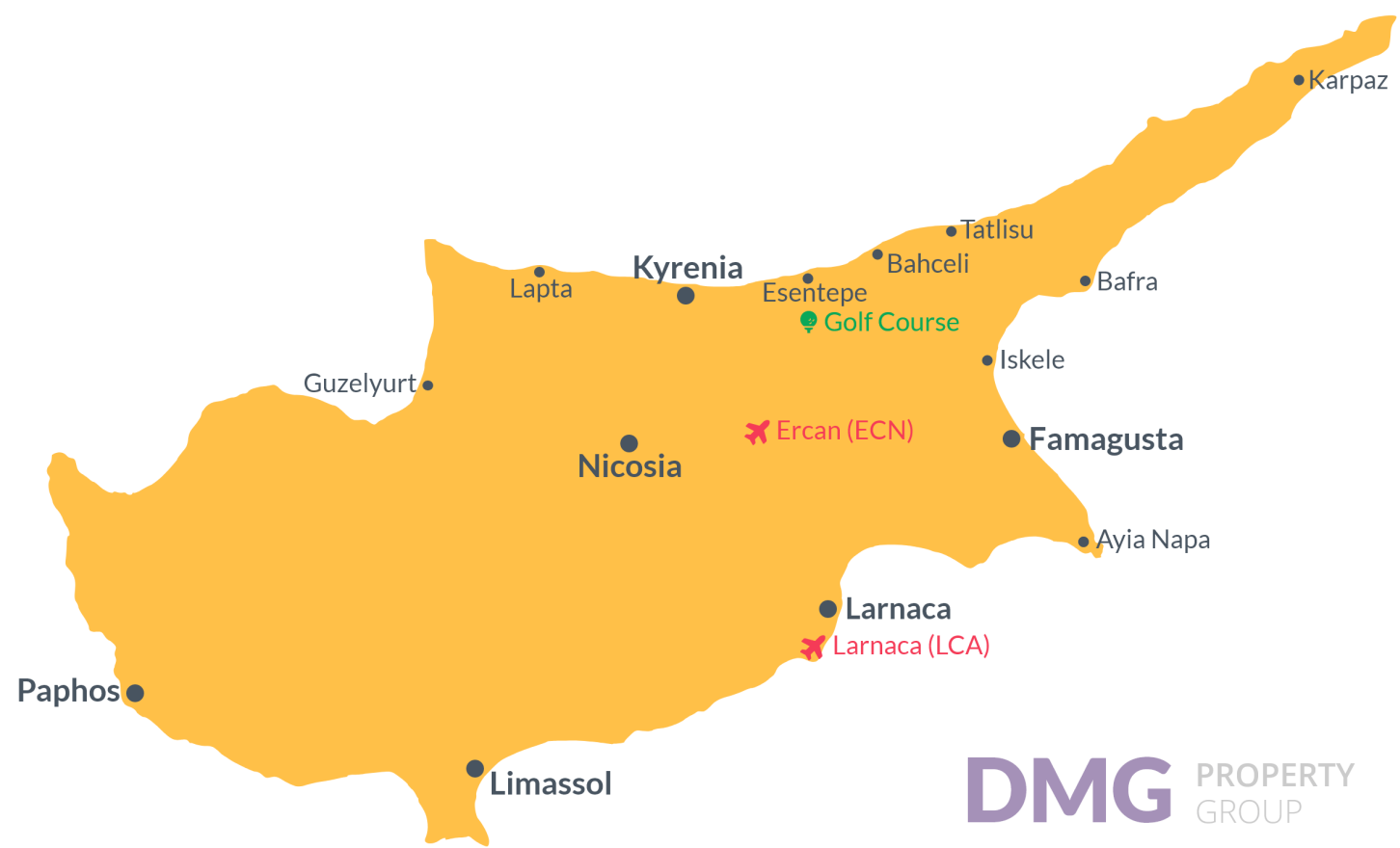
# Site Plan

Yenikent, Nicosia, North Cyprus



# Project Location

The project located is in the capital of Northern Cyprus, Nicosia.



|  |        |
|--|--------|
| Supermarket, Gym, Cafes                                  | 1 min  |
| The new Presidential Palace and TRNC Parliament Building | 1 min  |
| National Park  | 2 mins |
| Metehan Border Gate                                      | 3 mins |

|                                 |         |
|---------------------------------|---------|
| Bank                            | 3 mins  |
| Dereboyu Avenue Shopping Center | 4 mins  |
| TED College                     | 7 mins  |
| Near East University            | 12 mins |
| Ercan Airport                   | 24 mins |



# About the Project

This is a ready prestigious residential and commercial project in the capital of Northern Cyprus, offering prime location, high-quality construction, and promising prospects. Spanning 35,000 m2, it includes over 300 residences, 21 shops, and the island's largest gym. The development features urban green spaces, parks, restaurants, and essential services like clinics.

Emphasizing sustainability and modern living, apartments showcase eco-friendly materials, double-glazed windows, and high-end finishes. The project integrates seamlessly into commercial activities with ground-floor shops and adaptable residential spaces for businesses.

Strategically located near key establishments, including the new Presidential Complex, Near East Bank headquarters, and with top-notch amenities, Intense Nicosia stands out as a modern, vibrant community setting new standards in Northern Cyprus.

## Residential Apartment Features:

- Environmentally Friendly Material
- Double Glazed Aluminum
- Water and Heat Insulation for Roofs
- Custom Design Suspended Ceiling
- Parquet, Marble, and Ceramic Floor
- Master Bedroom En-Suite
- Acrylic Kitchen Cabinets
- Built-in Wardrobe
- Solar Energy Supported Water Boilers
- VRF/VRV Central Heating and Cooling

## System

- Environmentally Friendly Hansgrohe

## Sanitary Ware

- Central Hydrophore System
- Central Satellite, Internet, and Telephone

## Infrastructure

- Intercom System.

## Apartment Block Features:

# Lowest Price Unit For This Property Type

## Property Info

| Type                |
|---------------------|
| 2 Bedroom Penthouse |

| No  |
|-----|
| 401 |

| Block |
|-------|
| C3    |

| Floor |
|-------|
| 4     |

| Interior             |
|----------------------|
| 89.00 m <sup>2</sup> |

| Balcony Terrace      |
|----------------------|
| 13.00 m <sup>2</sup> |

| Rooftop              |
|----------------------|
| 28.00 m <sup>2</sup> |

| Total Living Space    |
|-----------------------|
| 130.00 m <sup>2</sup> |



