



Beachfront Two Bedroom Garden Apartments

Kaplica, Kyrenia East, צפון קפריסין

- רנוש רפ: 416
- Beachfront apartments for sale in North Cyprus
- 50 metres from a sandy beach!
- The last duplex unit available
- Fantastic investment opportunity and holiday home
- Expected capital appreciation 30% in 2 years. With a return of investment rate of net 7%

£295,000



152 m²



חדרי שינה 2



חדרי אמבטיה 2



יוני 2024
סיום

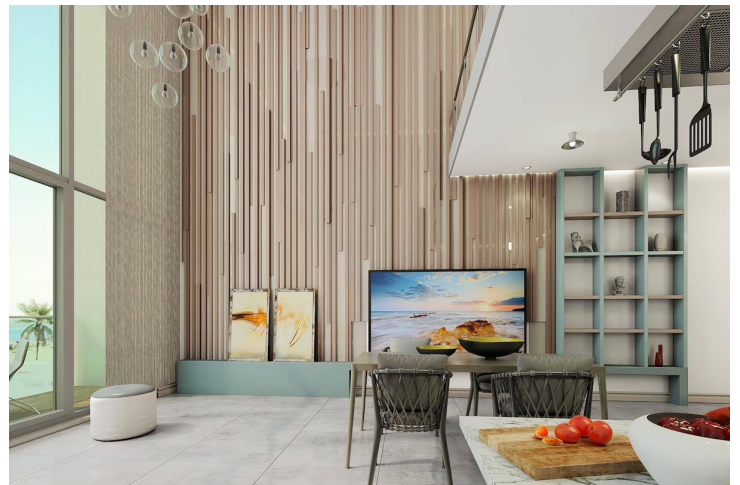
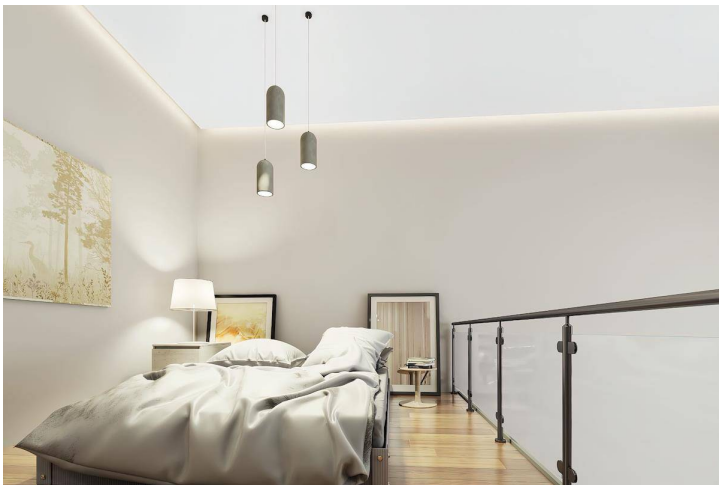
Beachfront Two Bedroom Garden Apartments

תמונות חיצוניות



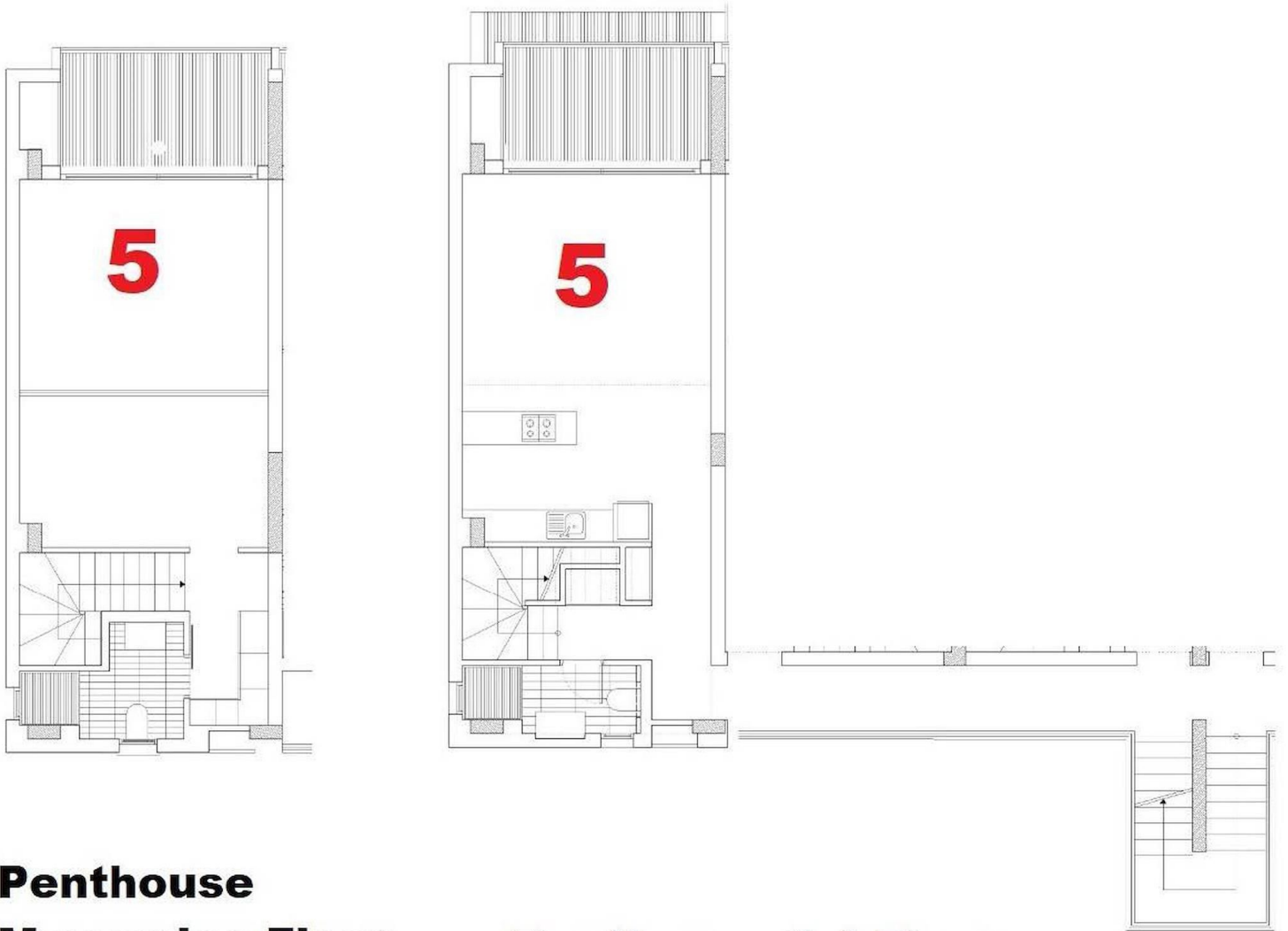
Beachfront Two Bedroom Garden Apartments

תמונות פנים



Beachfront Two Bedroom Garden Apartments

תכנית קומה

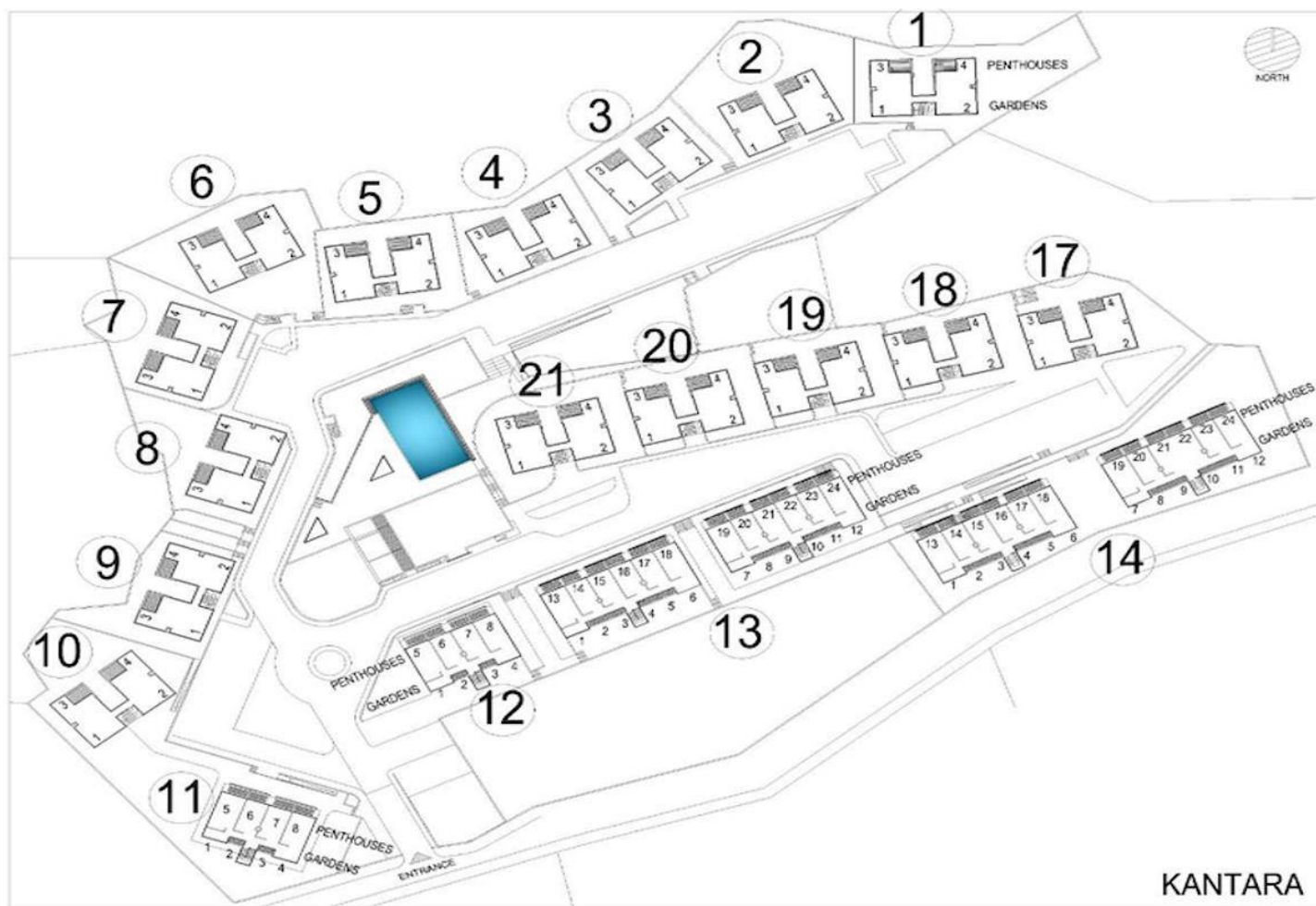


**Penthouse
Mezzanine Floor**

Penthouse 1st Floor

תוכנית אתר

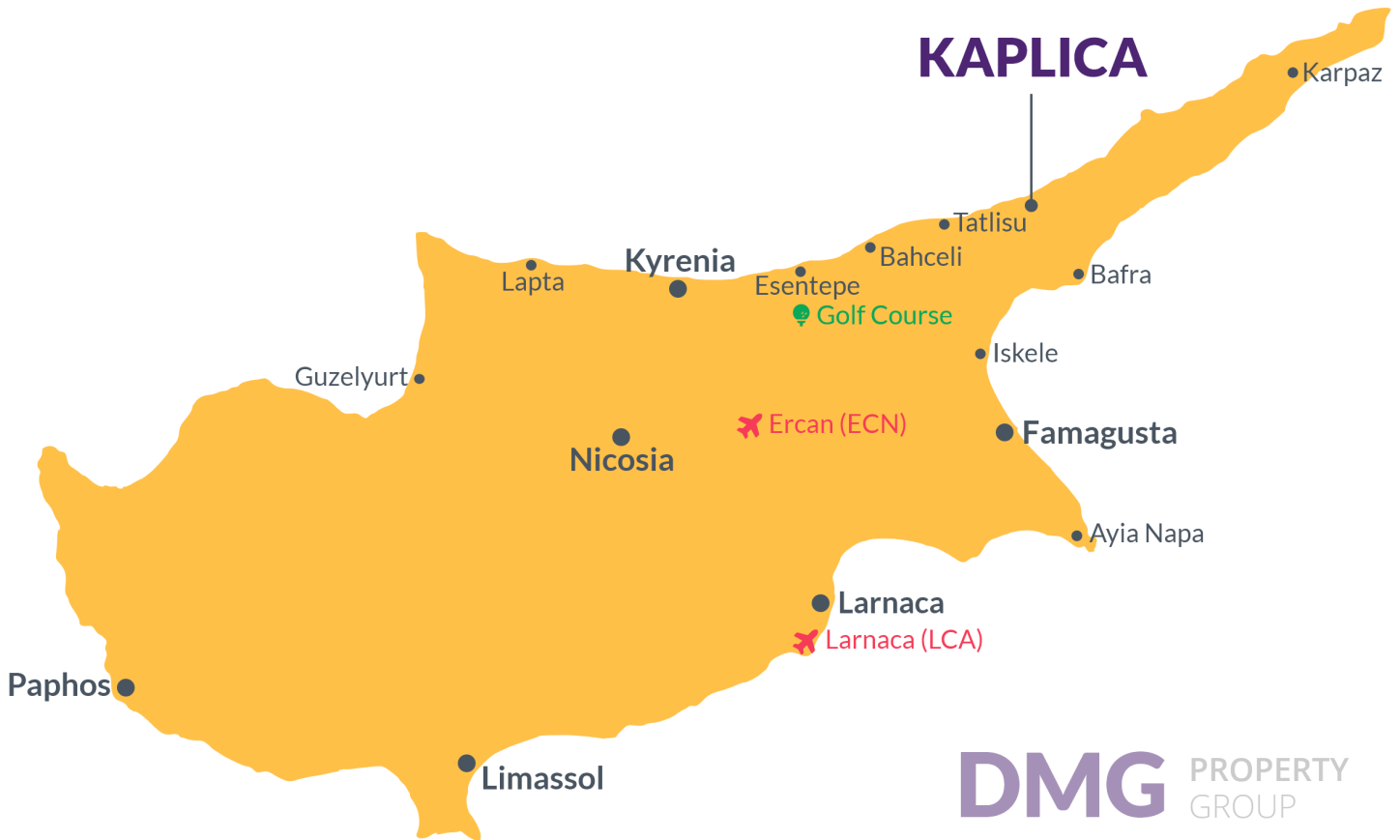
צפון קפריסין, Kaplica, Kyrenia East



מיקום הפרויקט

Kaplica Beach Homes is located in Kaplica village in Famagusta, Northern Cyprus.

Kaplica is a pretty Cypriot village located on the northern coast, east of Kyrenia, near Kantara Castle, technically in the district of Famagusta. It is a area where the property boom is expected in the next few years. The historic Kantara Castle on the Kyrenia mountain range is a short drive away. The beaches around here are the finest ones in Cyprus.



DMG PROPERTY GROUP

חוף חולי מדהים	1 דקה	מסלול גולף קורינואום	22 דקות
מסעדת דגים קפליקה	4 דקות	בוגז הדייגים בוגז	24 דקות
כפר קפליקה	5 דקות	מרכז העיר איסקל	26 דקות
סופרמרקט	5 דקות	נמל התעופה ארקון	50 דקות
קנטרה קנטרה	14 דקות	נמל התעופה של לרנקה	60 דקות

על הפרוייקט

Kaplica Beach Homes are beachfront apartment complex offering a unique investment opportunity in Northern Cyprus. The complex offers 68 two-bedroom apartments and 48 one-bedroom apartments, all having great sea views. The beach in front of the complex is a secluded sandy beach, allowing lucky owners to enjoy the Mediterranean Sea all year round.

Imagine waking up to the sound of the waves and swimming in the crystal clear waters of the Mediterranean a few minutes after you wake up...

Handover of the two-bedroom apartments is due January 2024 and one-bedroom apartments are due November 2024.

The value of your property investment is highly likely to increase by 25% within 2 years.

Peacefully nestled on one of North Cyprus' outer bays where lush mountain views come face to face with white sandy shores, Kaplica Beach Homes is on its way to actualising that luxurious seaside lifestyle you have been dreaming of.

Let your everyday life resemble a grand holiday in your own private beach house architecturally built with all the creature comforts you could ever need to experience exceptional convenience and high-quality entertaining. Treat yourself to many hours of tranquillity on one of North Cyprus' historic aqua blue coastlines while taking in scenic views from early morning sunrises to romantic golden sunsets.

Truly one of the most desirable up-and-coming beach homes on the island, you will never chance upon such a deluxe oasis situated within 50 metres of the sea! Whether you're a nature-loving retiree or simply someone looking for a lifestyle investment, you will look no further than this paradise offering an abundance of sun, sand and sea with an unquestionable touch of luxury.

Make the most of this superb location bundled with an impressive range of premium in-complex facilities. Partake of today's special in the local restaurant before pampering to a whole new level by hitting the private sauna or revelling in a traditional Turkish Hammam bath. Health enthusiasts can dabble between burning extra calories in the fitness centre and stretching those muscles with yoga in the Pilates room.

The project is 95% sold. Act now to pursue this once-in-a-lifetime opportunity. Please ask us about the latest availability information. A deposit of £2000 is all that is required to reserve your beachfront home and take it off the market.

Beachfront Two Bedroom Garden Apartments

מצב בנייה

אפריל 2024



מרץ 2024



יחידת המחיר הנמוכה ביותר עבור סוג נכס זה

מידע על נכס

סוג

חדרי שינה דירת דופלקס 2

לא

3

לחסום

21

קומה

1

פנים

108.00 m²

מרפסת מרפסת

9.00 m²

נג

35.00 m²

Total Living Space

152.00 m²

