



Studio Apartment in Esentepe

Esentepe, Kyrenia East, North Cyprus

- Property Ref: 409
- Hotel services and facilities
- Gated community
- Stunning views of the sea and mountains
- Modern design and high quality construction
- Flexible payment plan

£156,125



Studio



1 Bathroom



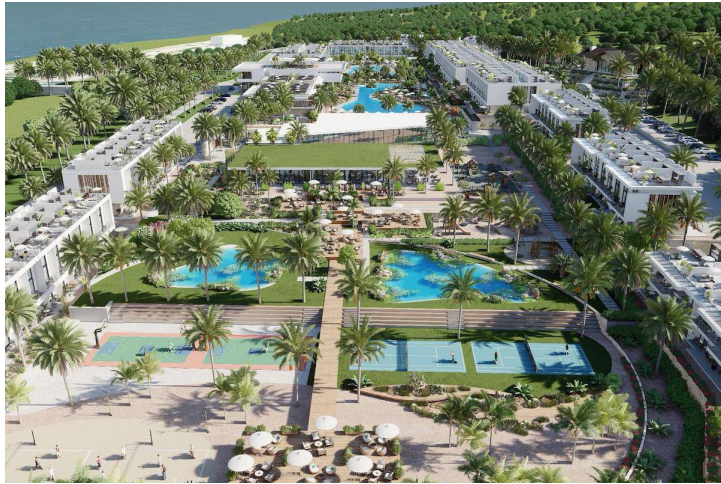
29 Months
Instalments



April 2027
Completion

Studio Apartment in Esentepe

Exterior Images



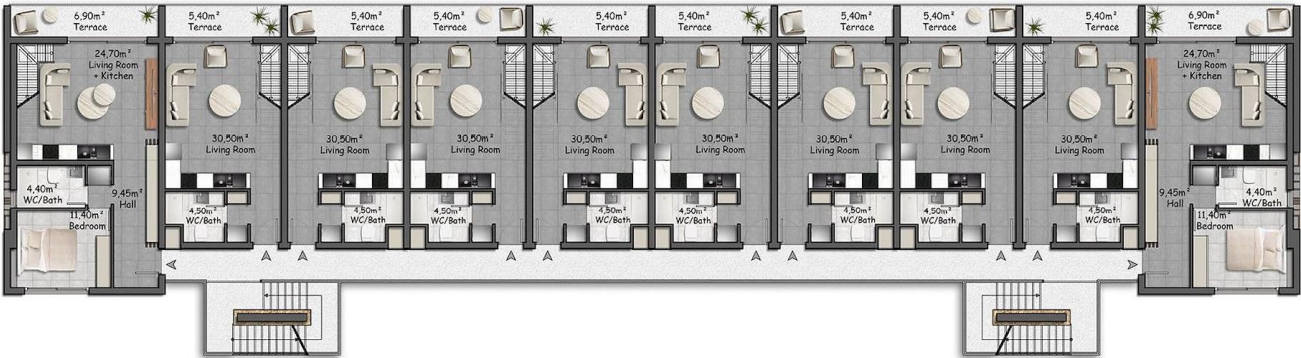
Studio Apartment in Esentepe

Interior Images



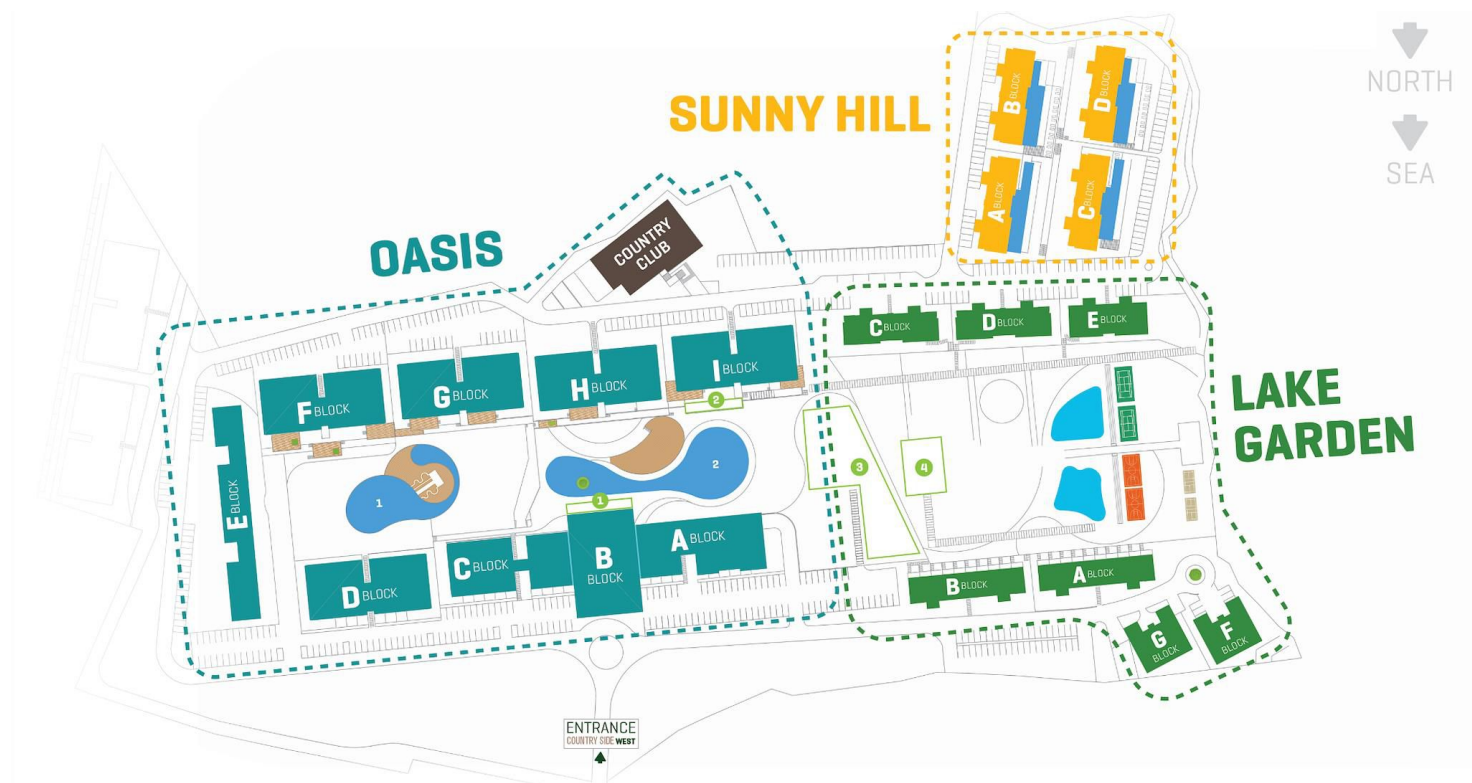
Studio Apartment in Esentepe

Floor Plan



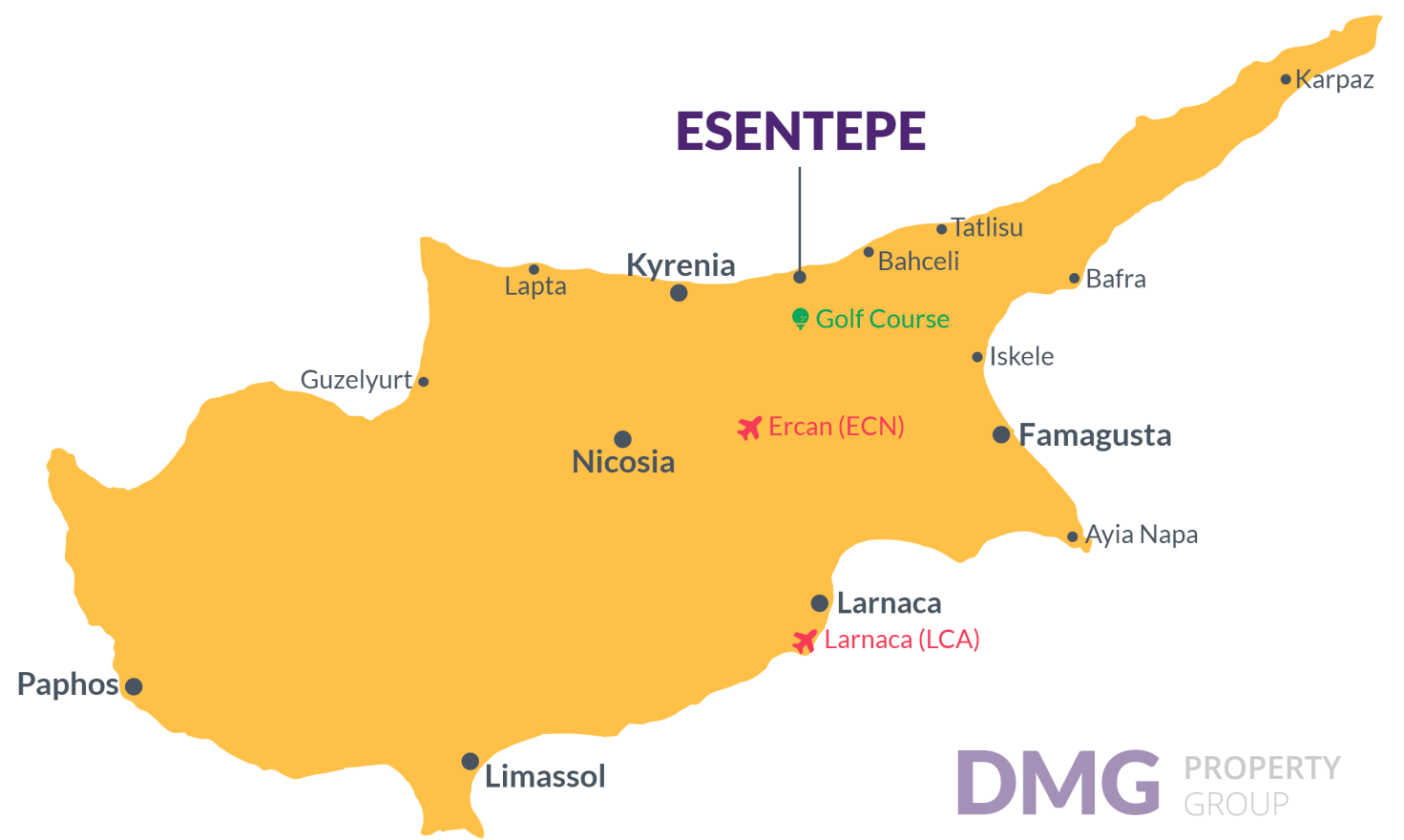
Site Plan

Esentepe, Kyrenia East, North Cyprus



Project Location

The project is located in the picturesque area of Esentepe between the sea and the mountains.



Restaurant and Bars	1 min	Korineum Golf Club	5 mins
Beach	2 mins	Kyrenia	15 mins
Supermarket	2 mins	Ercan Airport	40 mins
Pharmacy	2 mins	Famagusta	45 mins
Fitness and Spa Center	3 mins	Larnaca Airport	70 mins

About the Project

This remarkable project comprising 522 units ranging from studios to 1 2 and 3 bedroom apartments. Embraced by picturesque natural surroundings, this spacious haven offers an introverted living experience complemented by top notch hotel services and facilities. With a focus on family and social lifestyles, the project boasts an array of cafes, restaurants, and sports and children's facilities.

Gated Community

Security 7/24 CCTV

Lobby - Reception

Cafe & Bar

Main Restaurant

Family Cafe

Family Pool

Main Pool

Basketball Courts

Tennis Courts

Beach Volleyball Courts

Skateboard Ramp

Gym

Business Center

In & Out Children's

Playground

SERVICES [Hotel Concept]

- Customer Service
- Room Service
- Housekeeping Service
- Transfers
- Shuttle Service
- Maintenance Services

Studio Apartment in Esentepe

Construction Status

December 2023



Lowest Price Unit For This Property Type

Property Info

Type

Studio Apartment

No

F1

Block

F

Floor

Interior

38.00 m²

Balcony Terrace

5.00 m²

Total Living Space

43.00 m²

Lowest Price Unit For This Property Type

Payment Plan

Current Date	Start Date	Delivery Date	Price	Initial Payment Amount
May 2024	September 2024	April 2027	£156,125	£54,644 35%

65% of the installment payment plan

1. Installment June 2024	£2,985	25. Installment June 2026	£2,985
2. Installment July 2024	£2,985	26. Installment July 2026	£2,985
3. Installment August 2024	£2,985	27. Installment August 2026	£2,985
4. Installment September 2024	£2,985	28. Installment September 2026	£2,985
5. Installment October 2024	£2,985	29. Installment October 2026	£2,985
6. Installment November 2024	£2,985	30. Installment November 2026	£2,985
7. Installment December 2024	£2,985	31. Installment December 2026	£2,985
8. Installment January 2025	£2,985	32. Installment January 2027	£2,985
9. Installment February 2025	£2,985	33. Installment February 2027	£2,985
10. Installment March 2025	£2,985	34. Installment March 2027	£2,976
11. Installment April 2025	£2,985		
12. Installment May 2025	£2,985		
13. Installment June 2025	£2,985		
14. Installment July 2025	£2,985		
15. Installment August 2025	£2,985		
16. Installment September 2025	£2,985		
17. Installment October 2025	£2,985		
18. Installment November 2025	£2,985		
19. Installment December 2025	£2,985		
20. Installment January 2026	£2,985		
21. Installment February 2026	£2,985		
22. Installment March 2026	£2,985		
23. Installment April 2026	£2,985		
24. Installment May 2026	£2,985		