



One Bedroom Delux Seafront Apartment in Tatlisu Area

Tatlisu, Kyrenia East, North Cyprus

- Property Ref: 387
- Private beach and marina
- 8 km path for walking in the forest
- Amphitheatre
- Restaurant and bar
- Gym and spa

£268,000



1 Bedroom



1 Bathroom



43 Months Instalments



December 2027 Completion

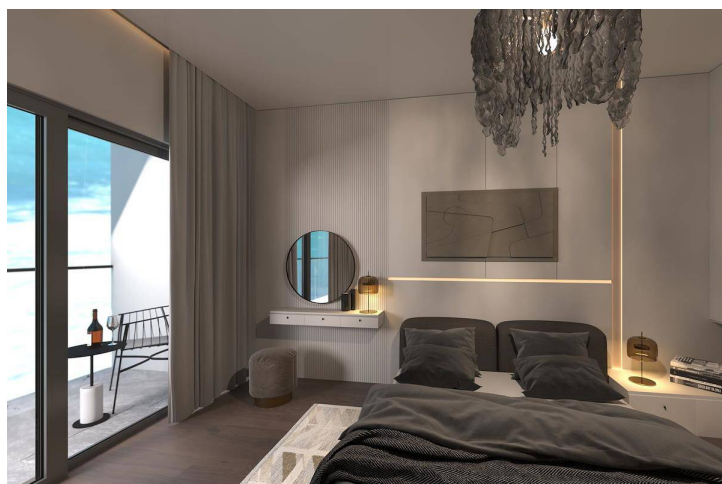
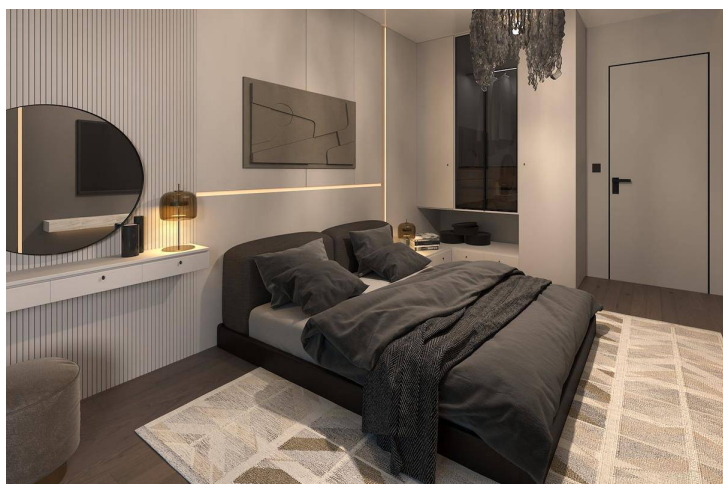
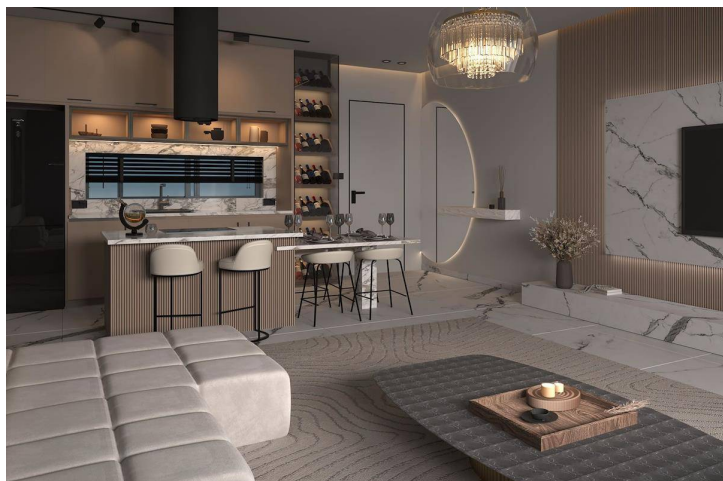
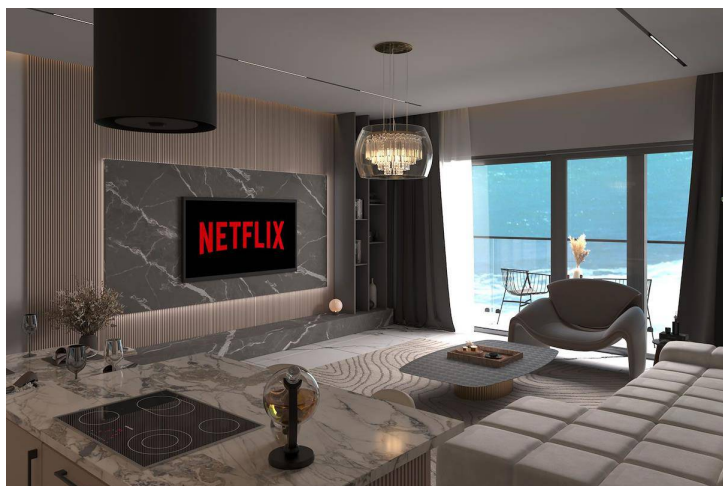
One Bedroom Delux Seafront Apartment in Tatlisu Area

Exterior Images



One Bedroom Delux Seafront Apartment in Tatlisu Area

Interior Images



One Bedroom Delux Seafront Apartment in Tatlisu Area

Floor Plan



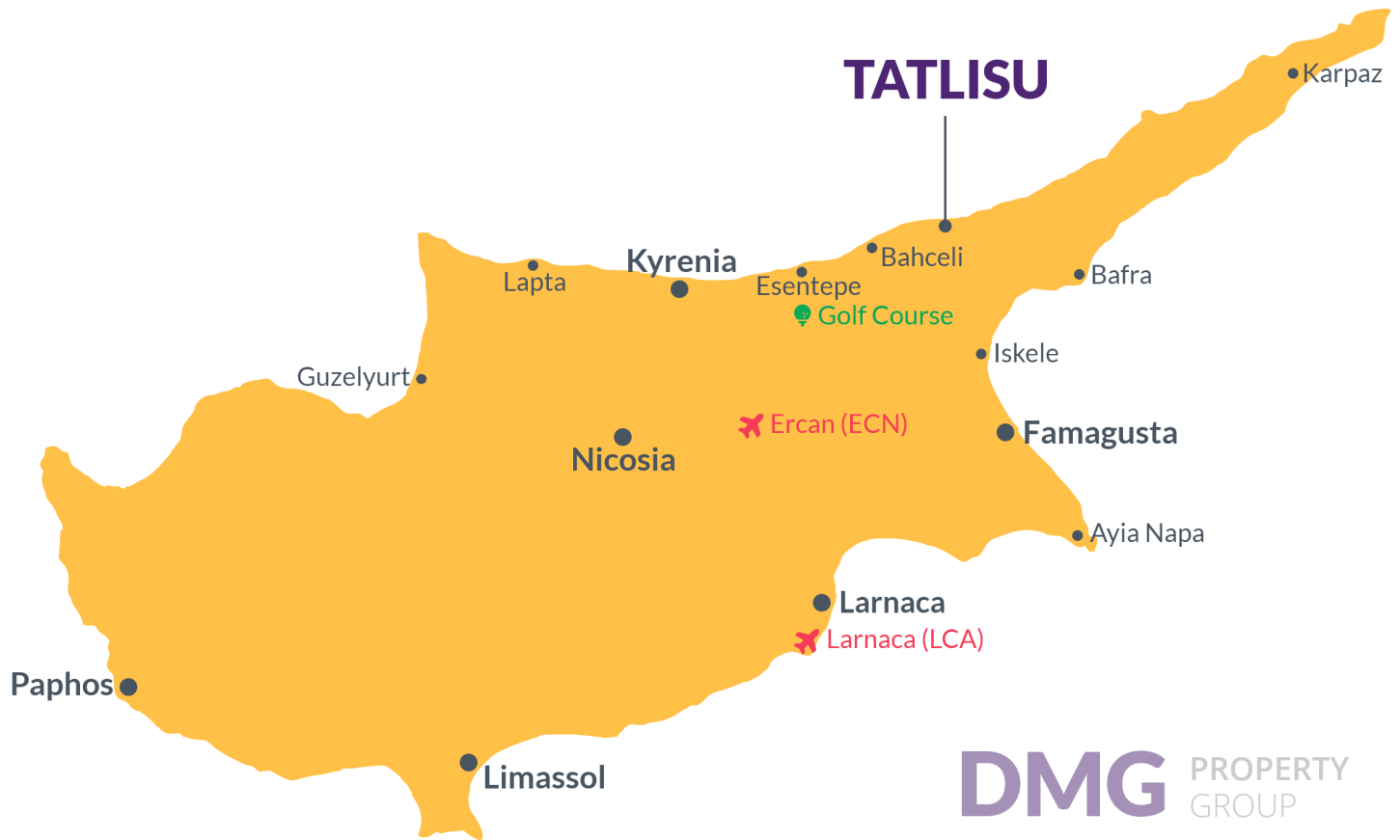
Site Plan

Tatlisu, Kyrenia East, North Cyprus



Project Location

The project is located in the picturesque Tatlisu area, 200 meters from the sea.



Sea	1 min	Ercan Airport	40 mins
Supermarket	3 mins	Larnaca Airport	60 mins
Restaurants and Bars	5 mins	Kyrenia	60 mins
Korineum Golf Club	15 mins		
Famagusta	35 mins		

About the Project

Located just steps from the crystal clear waters of the Mediterranean Sea, the Project offers breathtaking views of both the sea and the surrounding mountains. With over 400 houses to choose from, you'll have plenty of options to find the perfect home to suit your needs.

But this is more than just a place to live - it's a true oasis of relaxation and rejuvenation. The complex features a luxurious wellness hotel, complete with all the amenities you need to unwind and recharge. And if that wasn't enough, we're also building a unique themed beach for our residents and guests. And when it comes to management and rental systems, you can trust the experienced team to take care of everything. With their impressive track record and expertise, you can be confident that your experience at this amazing project will be nothing short of extraordinary.

One Bedroom Delux Seafront Apartment in Tatlisu Area

Construction Status

January 2024



Lowest Price Unit For This Property Type

Property Info

Type

1 Bedroom Apartment

No

B9-3

Block

Forest-B9

Floor

0

Interior

65.56 m²

Balcony Terrace

31.83 m²

Total Living Space

97.39 m²

Lowest Price Unit For This Property Type

Payment Plan

Current Date	Start Date	Delivery Date	Price	Initial Payment Amount
April 2024	July 2024	December 2027	£268,000	£107,200 40%

60% of the installment payment plan

1. Installment May 2024	£3,740	25. Installment May 2026	£3,740
2. Installment June 2024	£3,740	26. Installment June 2026	£3,740
3. Installment July 2024	£3,740	27. Installment July 2026	£3,740
4. Installment August 2024	£3,740	28. Installment August 2026	£3,740
5. Installment September 2024	£3,740	29. Installment September 2026	£3,740
6. Installment October 2024	£3,740	30. Installment October 2026	£3,740
7. Installment November 2024	£3,740	31. Installment November 2026	£3,740
8. Installment December 2024	£3,740	32. Installment December 2026	£3,740
9. Installment January 2025	£3,740	33. Installment January 2027	£3,740
10. Installment February 2025	£3,740	34. Installment February 2027	£3,740
11. Installment March 2025	£3,740	35. Installment March 2027	£3,740
12. Installment April 2025	£3,740	36. Installment April 2027	£3,740
13. Installment May 2025	£3,740	37. Installment May 2027	£3,740
14. Installment June 2025	£3,740	38. Installment June 2027	£3,740
15. Installment July 2025	£3,740	39. Installment July 2027	£3,740
16. Installment August 2025	£3,740	40. Installment August 2027	£3,740
17. Installment September 2025	£3,740	41. Installment September 2027	£3,740
18. Installment October 2025	£3,740	42. Installment October 2027	£3,740
19. Installment November 2025	£3,740	43. Installment November 2027	£3,720
20. Installment December 2025	£3,740		
21. Installment January 2026	£3,740		
22. Installment February 2026	£3,740		
23. Installment March 2026	£3,740		
24. Installment April 2026	£3,740		

