



Sea Front Studio Penthouse in Bahceli

Bahceli, Kyrenia East, North Cyprus

- Property Ref: 380
- Ready to move in
- Facilities include spa, fully equipped gym, sauna, indoor heated pool, beach bar, a la carte restaurant, olympic sized communal pool in the main complex and a saltwater pool on the frontline
- An exceptional range of anti-ageing, rejuvenation and wellness services
- Gorgeous views of the sea and mountains

Starting from
£170,000



55 m²



Studio



1 Bathroom



6 Months
Instalments



March 2024
Completion

Email: sales@dmgpropertygroup.com
Website: www.dmgpropertygroup.com

DMG PROPERTY
GROUP

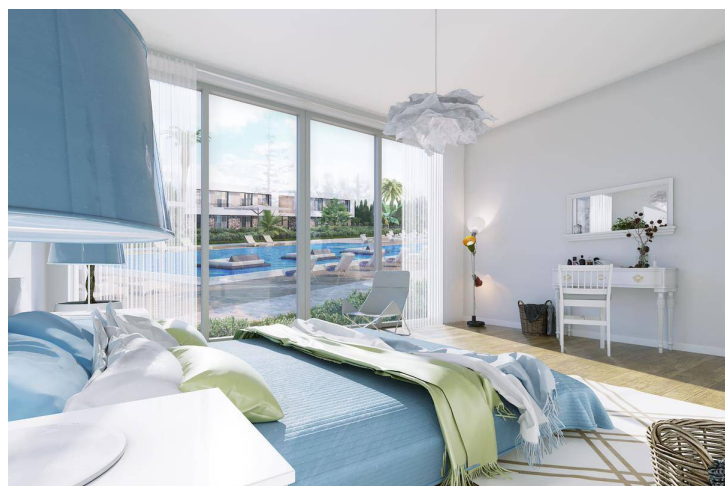
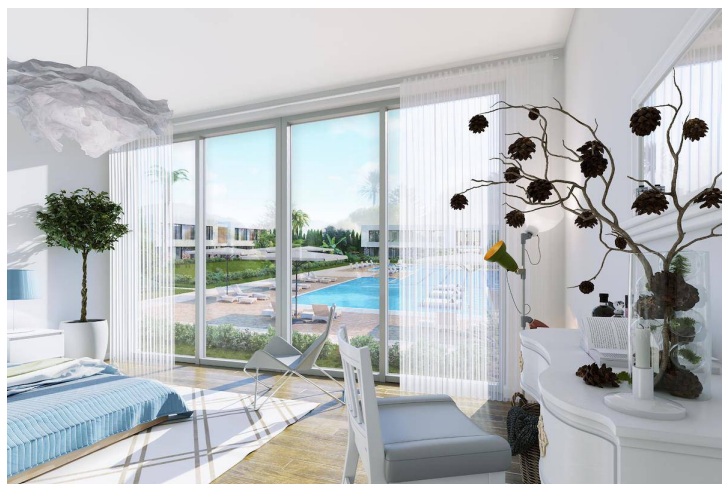
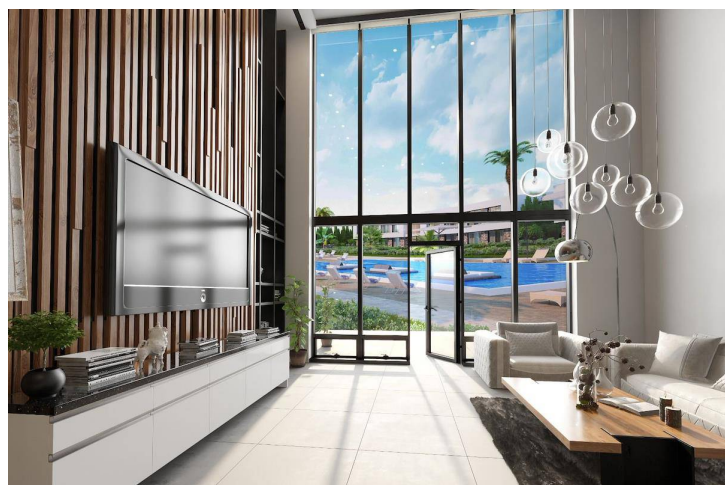
Sea Front Studio Penthouse in Bahceli

Exterior Images



Sea Front Studio Penthouse in Bahceli

Interior Images



Sea Front Studio Penthouse in Bahceli

Floor Plan



Facilities



Anti-aging



Gardens (Landspaced)



Hobby Gardens



Parking



Pool (Outdoor)



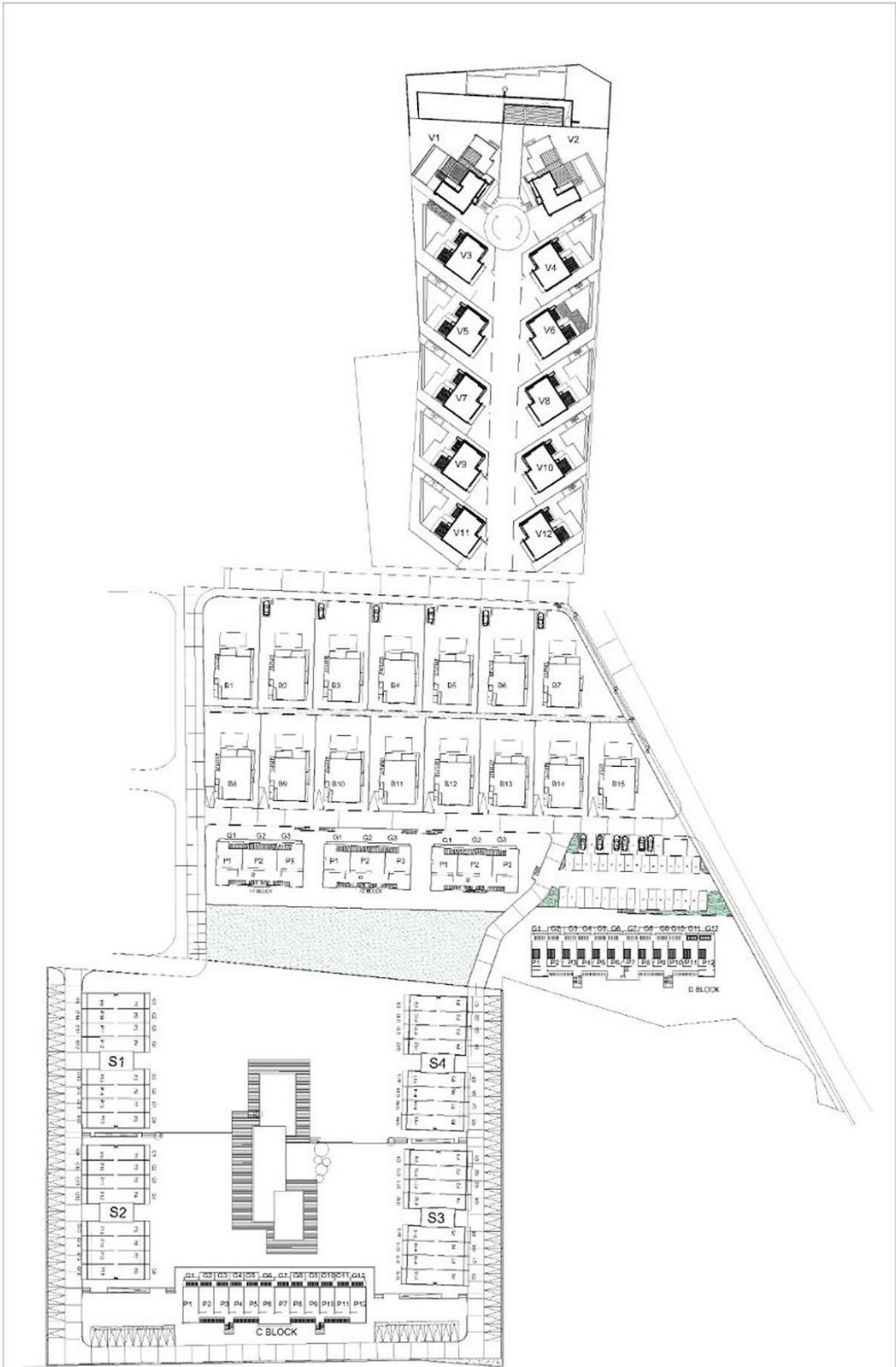
Water Sports (On-site)



Wellness

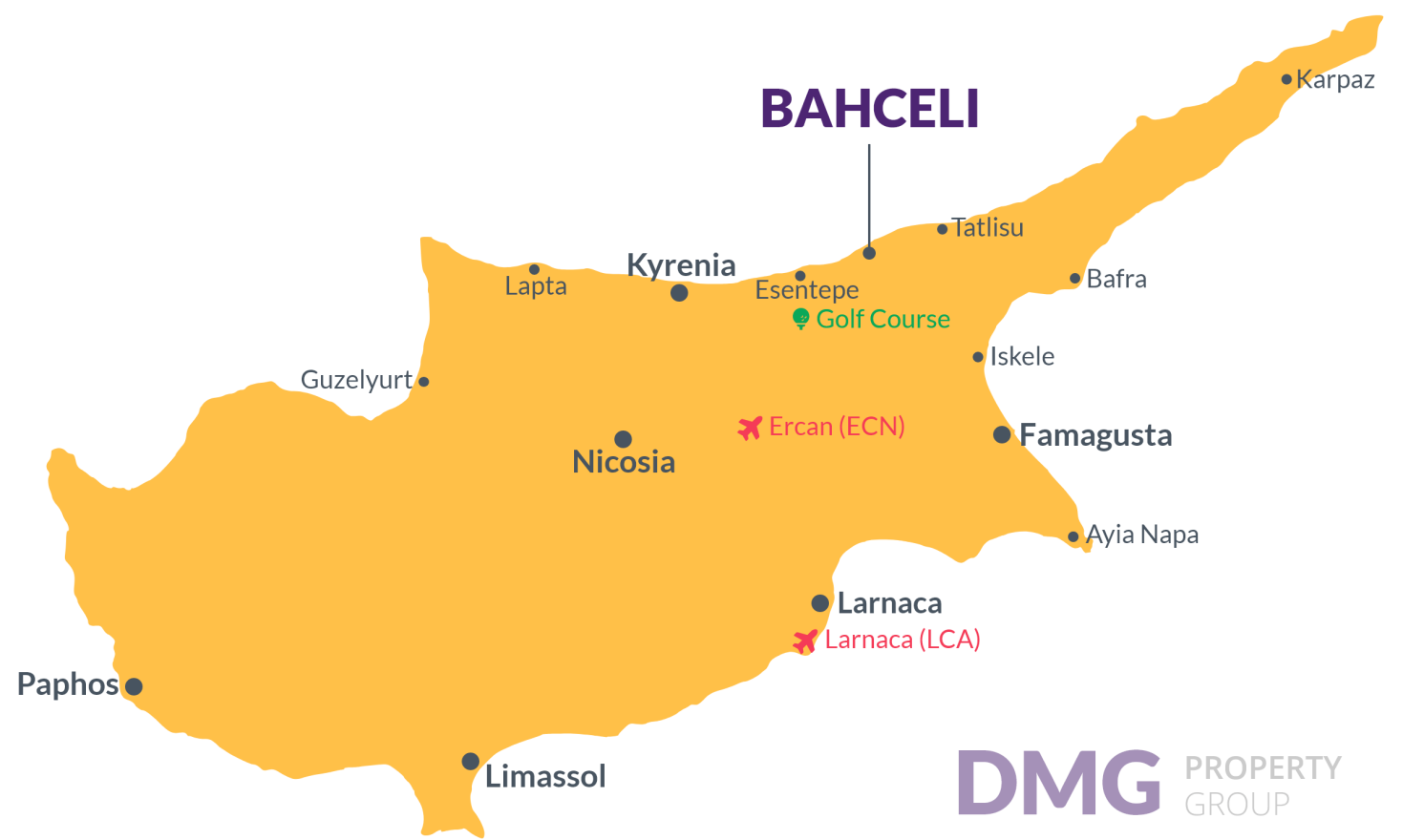
Site Plan

Bahceli, Kyrenia East, North Cyprus



Project Location

The project is located 100m away from the beach in beautiful Bahceli area.



The Beach by walking distance	1 min	Korineum Golf & Beach Resort	11 mins
Supermarket	2 mins	Kyrenia	40 mins
Restaurants and Bars	5 mins	Famagusta	42 mins
Petrol Station	5 mins	Ercan Airport	45 mins
Pharmacy	6 mins	Larnaca Airport	75 mins

About the Project

This is a beachfront project on the North coast of Cyprus, the very first resort on the island with the concept of eco-wellness. This development prides itself on its beautiful seafront location, just 100 metres away from the sea with the Kyrenia Mountain range as a backdrop.

You will find an exceptional range of anti-ageing, rejuvenation and wellness services in addition to its focus on nutrition with foods grown at the site.

This project enjoys access to its own maintained beach with a beautiful blue lagoon, ideal for swimming and snorkelling. Facilities include spa, fully equipped gym, sauna, indoor heated pool, beach bar, a la carte restaurant, olympic sized communal pool in the main complex and a saltwater pool on the frontline.

Sea Front Studio Penthouse in Bahceli

Construction Status

March 2024



December 2023



Lowest Price Unit For This Property Type

Property Info

Type

Studio Penthouse

No

P5

Block

S2

Floor

1

Interior

33.00 m²

Balcony Terrace

4.00 m²

Rooftop

18.00 m²

Total Living Space

55.00 m²

Lowest Price Unit For This Property Type

payment plan remaining after delivery

30% payment plan remaining after delivery

1. Installment July 2024	£8,500
2. Installment August 2024	£8,500
3. Installment September 2024	£8,500
4. Installment October 2024	£8,500
5. Installment November 2024	£8,500
6. Installment December 2024	£8,500