

Three Bedroom Apartment Surrounded by Nature

Esentepe, Kyrenia East, North Cyprus

- Property Ref: 332
- Only 6 minute walk to the beach.
- Esentepe has a unique sea and nature view.
- A perfect life with its unique location and aesthetic architecture.
- Close to all necessities, including supermarkets and pharmacies.
- Our units are designed with high-quality finishes and modern appliances to create a comfortable living space.

£235,000



121 m²



3 Bedrooms



2 Bathrooms



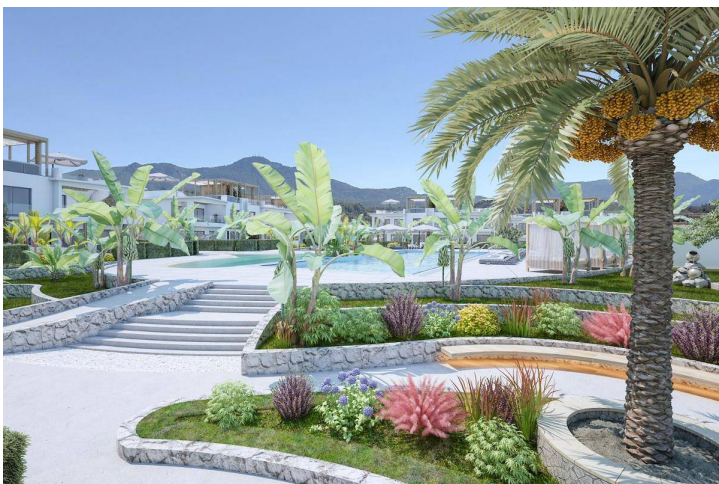
12 Months Instalments



March 2024
Completion

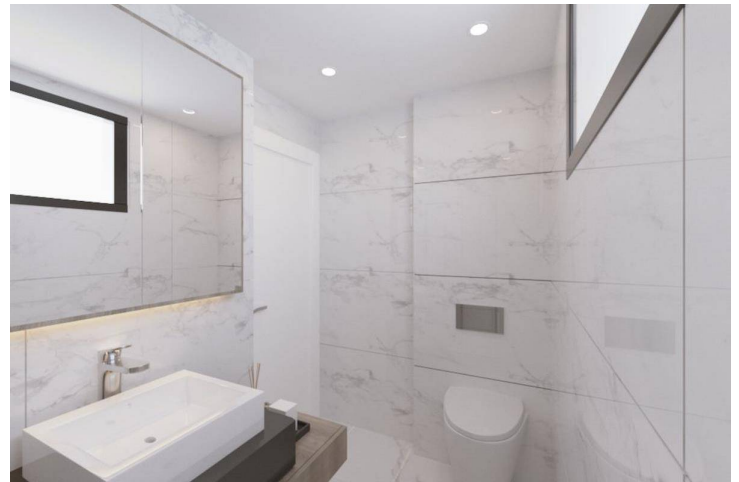
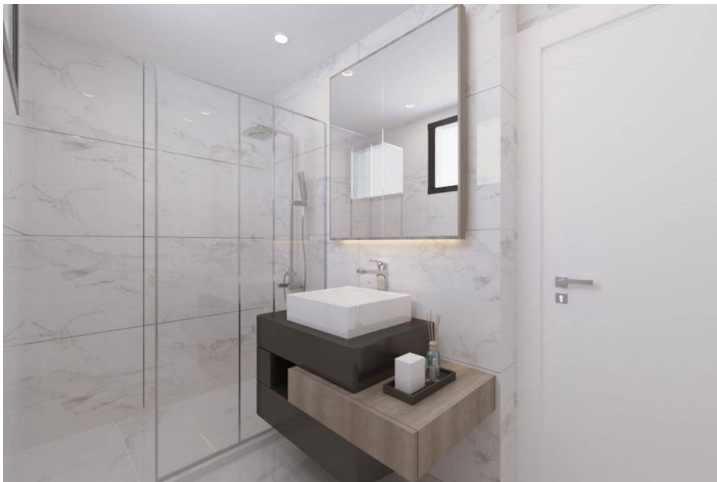
Three Bedroom Apartment Surrounded by Nature

Exterior Images



Three Bedroom Apartment Surrounded by Nature

Interior Images



Three Bedroom Apartment Surrounded by Nature

Floor Plan



Site Plan

Esentepe, Kyrenia East, North Cyprus



Project Location

Project is located in Esentepe, Girne.



Supermarket	2 mins	Market	7 mins
Beach	2 mins	Ercan Airport	40 mins
Pharmacy	4 mins	Larnaca Airport	80 mins
Cafes and Restaurants	5 mins		
ATM & Bank	5 mins		

About the Project

Discover an enclave of luxury living with our residential complex, featuring six elegant two-story blocks housing a total of 36 meticulously designed apartments. Centered around a communal swimming pool, this oasis offers breathtaking panoramic views from every angle – be it the serene sea, majestic mountains, or lush forest. Conveniently located within walking distance of both the pristine beach and a well-stocked supermarket, our complex provides an idyllic setting for leisure, investment, or permanent residency. A mere minute away, the nearby bus stop ensures easy connectivity, while a dedicated school bus service stands ready to transport your children to and from school, enhancing the overall convenience of this exceptional living space.

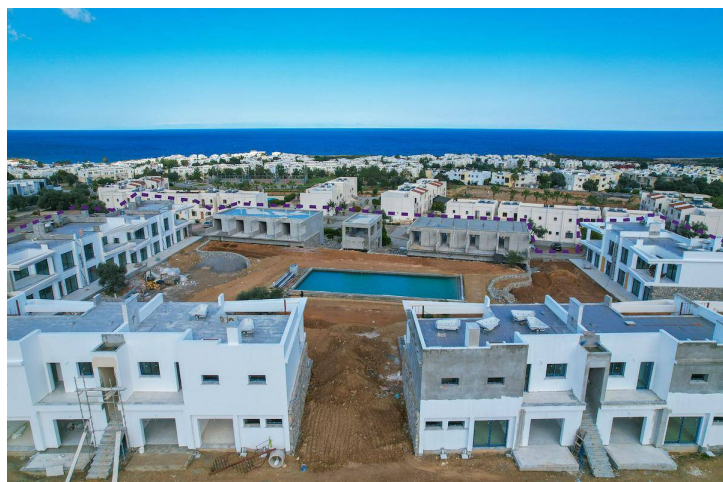
Three Bedroom Apartment Surrounded by Nature

Construction Status

March 2024



February 2024



Lowest Price Unit For This Property Type

Property Info

Type

3 Bedroom Apartment

No

1

Block

G

Floor

0

Interior

85.00 m²

Balcony Terrace

36.00 m²

Total Living Space

121.00 m²

Lowest Price Unit For This Property Type

payment plan remaining after delivery

30% payment plan remaining after delivery

1. Installment June 2024	£5,875
2. Installment July 2024	£5,875
3. Installment August 2024	£5,875
4. Installment September 2024	£5,875
5. Installment October 2024	£5,875
6. Installment November 2024	£5,875
7. Installment December 2024	£5,875
8. Installment January 2025	£5,875
9. Installment February 2025	£5,875
10. Installment March 2025	£5,875
11. Installment April 2025	£5,875
12. Installment May 2025	£5,875

