



Studio Garden Apartments near Tatlisu

Tatlisu, Kyrenia East, North Cyprus

- Property Ref: 283
- Only 5 minute walk to the beach
- A large variety of facilities will be available on the projects, including several restaurants, communal swimming pools, gym, sauna, hammam, massage rooms, yoga and pilates areas and many more.
- Fantastic opportunity for first time investors
- Close to all necessities, including supermarkets and pharmacies
- Payment plan for 36 months

£114,950



49 m²



Studio



1 Bathroom



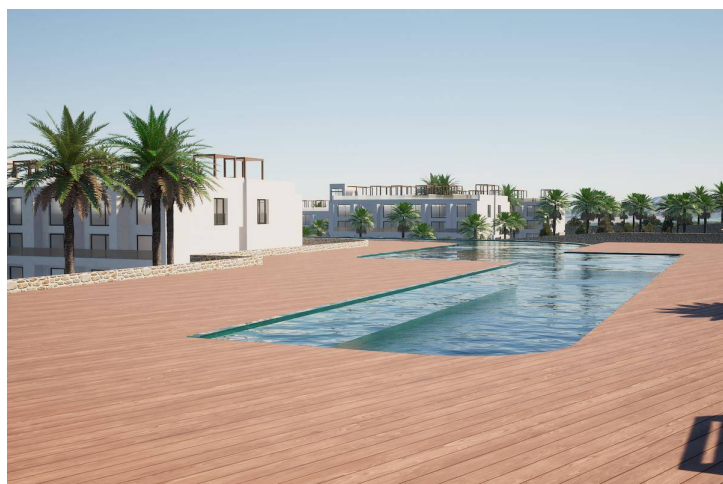
35 Months
Instalments



April 2027
Completion

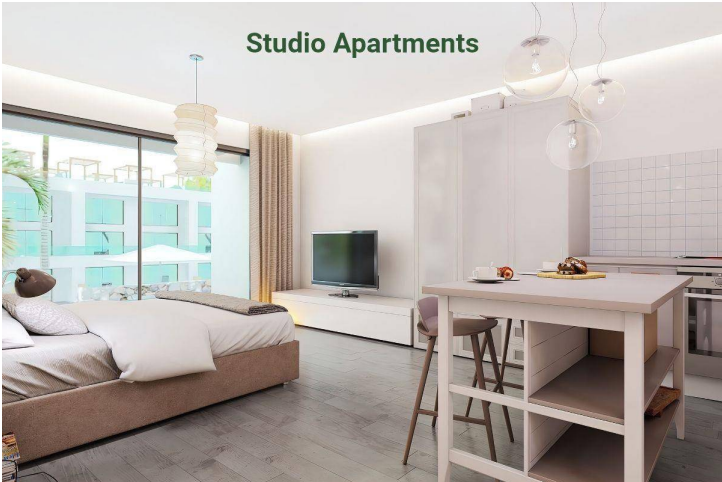
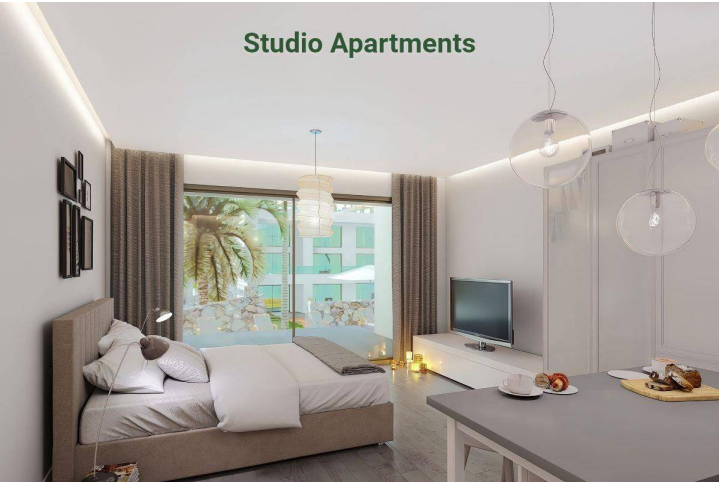
Studio Garden Apartments near Tatlisu

Exterior Images



Studio Garden Apartments near Tatlisu

Interior Images



Studio Garden Apartments near Tatlisu

Floor Plan

TİP A-B [1+1 - STUDIO BLOCKS]



Site Plan

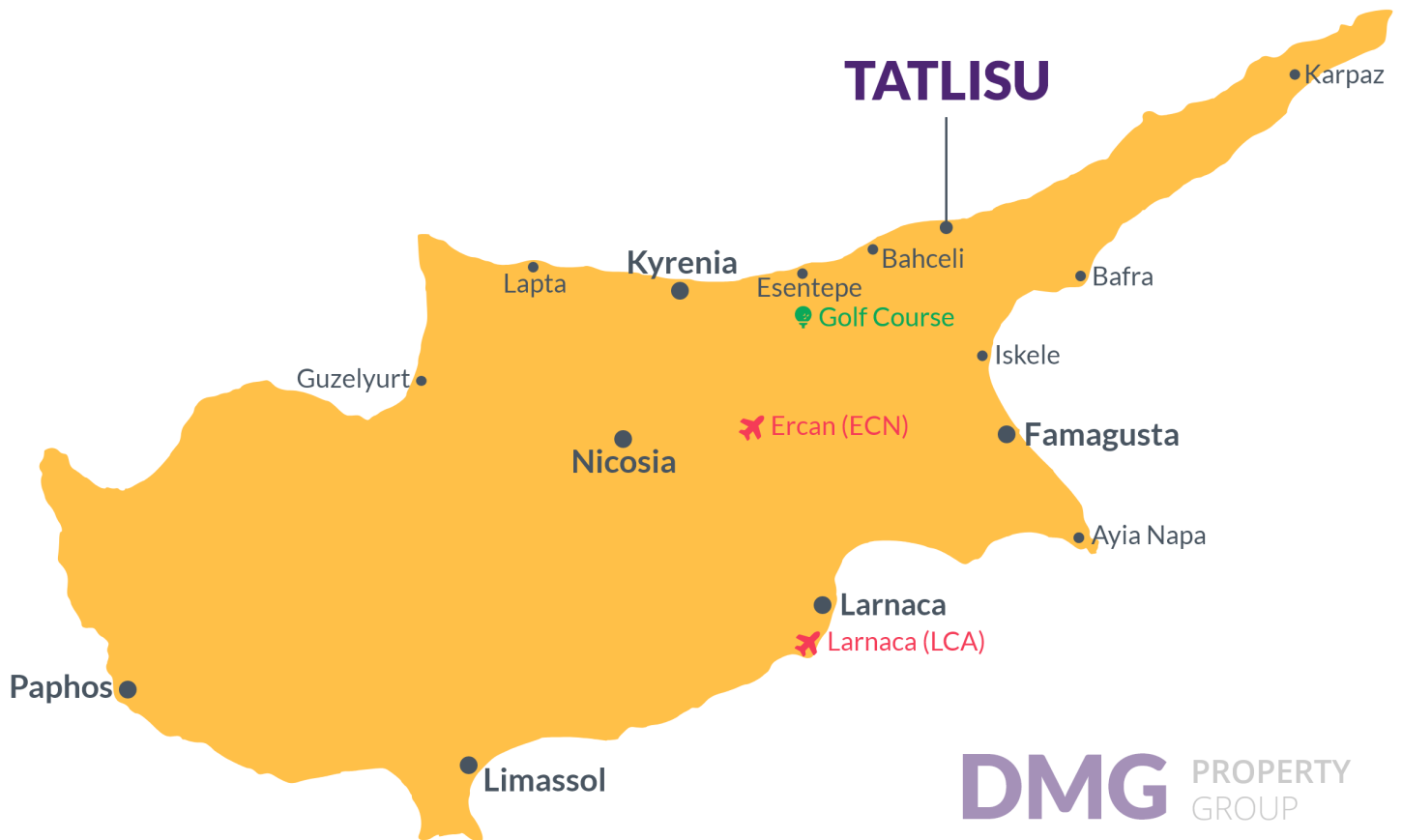
Tatlisu, Kyrenia East, North Cyprus



Project Location

Green Valley Homes is located in Tatlisu village in Kyrenia, Northern Cyprus.

Tatlisu is a small Cypriot village that lies just east of its bigger neighbour, Esentepe. Tatlisu is within easy reach of the 18 hole international golf course at the Korineum Golf Club, excellent sandy beaches, good restaurants and even football matches at the Esentepe local stadium.



Supermarket	3 mins	Kyrenia Town Centre	32 mins
Pharmacy	5 mins	Ercan Airport	45 mins
Esentepe Village	5 mins	Larnaca Airport	65 mins
Restaurants & Bars	5 mins		
Korineum Golf Course	12 mins		

About the Project

Relocate to Paradise

Welcome to an extraordinary opportunity at the stunning complex in Tatlisu! We are thrilled to present to you an amazing selection of studios, bungalows, and apartments that will undoubtedly captivate your imagination and fulfill your dreams of a luxurious and harmonious lifestyle.

The site office, spanning a total of 1200m², ensures efficient management and assistance and the local authority office, covering 50m², guarantees a seamless administrative experience.

Be enthralled by the incredible outdoor facilities available here. Immerse yourself in a world of convenience & security while exploring the 10km mountain trails or 4 km running/biking road complete with two lanes. Along the way, you'll find comfortable benches & enchanting lights illuminating your path, or conveniently located bus stops are available for public transport.

Indulge in a world of leisure at the courts center, boasting an array of facilities including a tennis court, basket base court, sand beach volleyball, and paddle tennis, or take the kids to the playground, climbing wall, or outdoor gym. Pamper your furry friends in the dogs' garden or discover produce in the organic garden and farmers' market. Experience the bliss of the serene Zen garden and the dedicated yoga/meditation area or escape the summer heat in the inviting swimming pools or thrilling Mini Aquapark.

Indoors you can immerse yourself in a world of rejuvenation and wellbeing at the indoor pool, luxurious spa, massage center, and opulent separate sauna & steam room with ice-shower facilities. Lovely indoor gardens exude elegance and sophistication, creating a harmonious environment.

For your convenience, bookable lounges, a co-working space, and a conference hall/cinema room are available for gatherings, work, and special events. Quench your thirst and satisfy your taste buds at the exquisite restaurant or unwind at the bar/mist lounge boasting a range of entertainment. Indulge in celestial beauty and stargazing at the breathtaking Roof Bar/Skylight Star Watching area.

Commercial offerings including 24-7 A&E healthcare, Super Market, Coffee & Bakery, Bank/ATM, Car Rental, Pharmacy, Bike/Scooter rentals, and beauticians, offer ultimate convenience at your doorstep.

With an easy payment plan offering a 30% down-payment, 6 months break, 10% payment, 6 months break, 10% payment, and final 50% on an interest free payment plan for 36 months, now is the ideal time to buy.

Get in touch with us to find out more!

Studio Garden Apartments near Tatlisu

Construction Status

January 2024



Lowest Price Unit For This Property Type

Property Info

Type

Studio Garden Apartment

No

G8

Block

F20

Floor

0

Interior

43.00 m²

Balcony Terrace

6.00 m²

Total Living Space

49.00 m²

Lowest Price Unit For This Property Type

Payment Plan

Current Date	Start Date	Delivery Date	Price	Initial Payment Amount
April 2024	June 2024	April 2027	£114,950	£40,232 35%

65% of the installment payment plan

1. Installment May 2024	£2,135	25. Installment May 2026	£2,135
2. Installment June 2024	£2,135	26. Installment June 2026	£2,135
3. Installment July 2024	£2,135	27. Installment July 2026	£2,135
4. Installment August 2024	£2,135	28. Installment August 2026	£2,135
5. Installment September 2024	£2,135	29. Installment September 2026	£2,135
6. Installment October 2024	£2,135	30. Installment October 2026	£2,135
7. Installment November 2024	£2,135	31. Installment November 2026	£2,135
8. Installment December 2024	£2,135	32. Installment December 2026	£2,135
9. Installment January 2025	£2,135	33. Installment January 2027	£2,135
10. Installment February 2025	£2,135	34. Installment February 2027	£2,135
11. Installment March 2025	£2,135	35. Installment March 2027	£2,128
12. Installment April 2025	£2,135		
13. Installment May 2025	£2,135		
14. Installment June 2025	£2,135		
15. Installment July 2025	£2,135		
16. Installment August 2025	£2,135		
17. Installment September 2025	£2,135		
18. Installment October 2025	£2,135		
19. Installment November 2025	£2,135		
20. Installment December 2025	£2,135		
21. Installment January 2026	£2,135		
22. Installment February 2026	£2,135		
23. Installment March 2026	£2,135		
24. Installment April 2026	£2,135		

